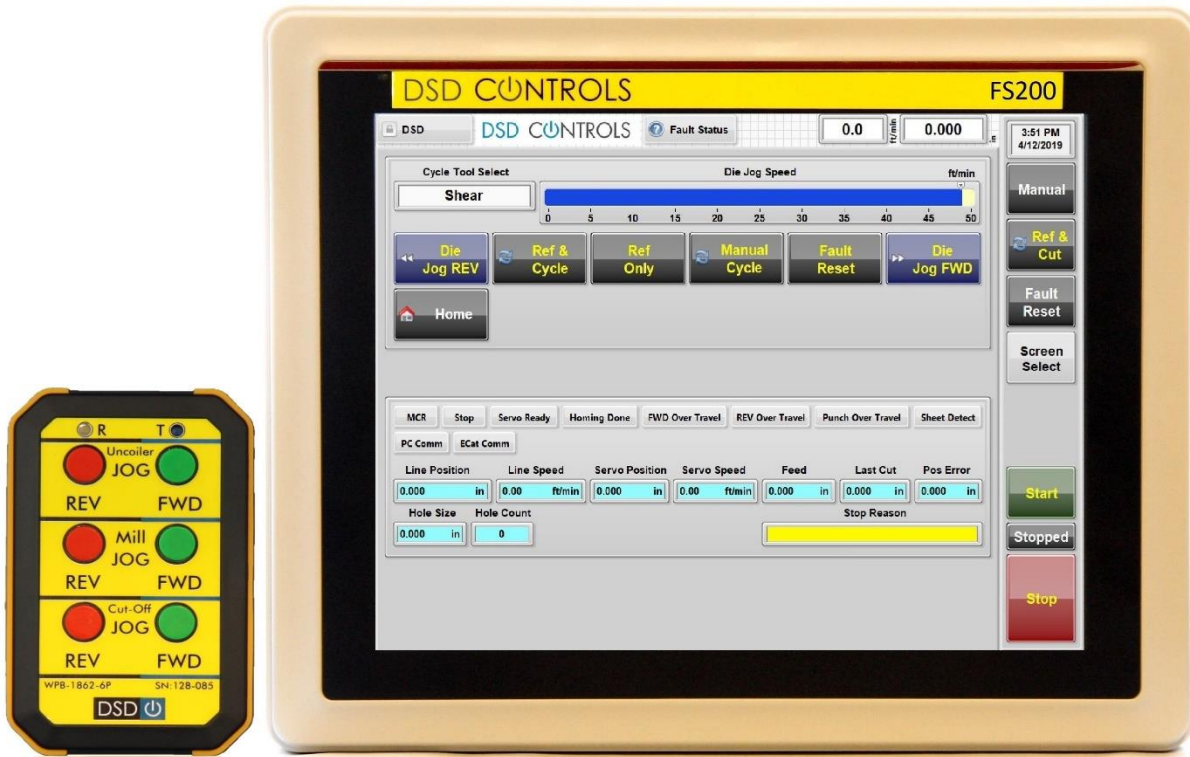


# DSD-FS200 Flying Shear Controller



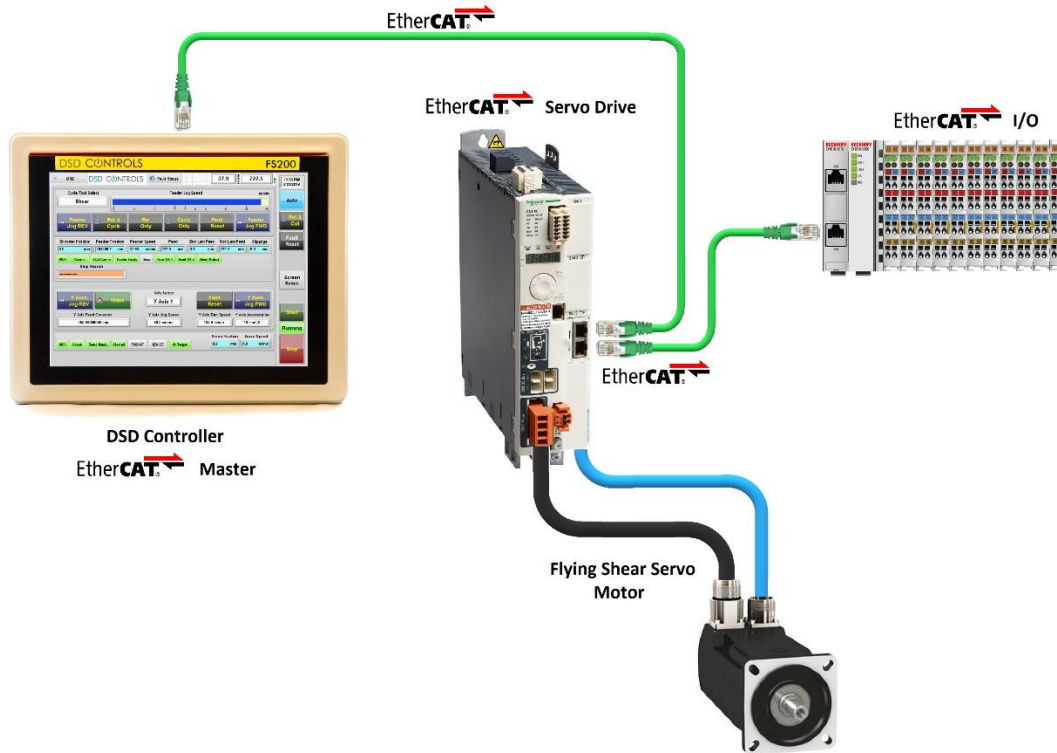
The DSD-FS200 controller is designed to be an ultimate controller for the Flying Shear applications. It uses the EtherCAT real-time communication to connect to the servo drives and remote I/O modules to increase the machine accuracy and efficiency. The controller filled with options and tools to make the operation as easy as possible for machine operators. Beside the main closed loop flying shear, it can control multiple closed loop and open loop flying punches and multiple printer and print heads.

It has a built-in production data logger which is accessible to the operator and will keep track of all the machine production and events. following is a brief description of the controller and its capabilities:

- Works with most servo drives such as ABB, Schneider, Omron, Parker, Panasonic, Yaskawa ... over EtherCAT
- Large industrial IP65 panel PC with resistive touch screen, all solid state and no moving part

- Multiple password and access level for operators, supervisor, engineer, designer and administrator
- Back-up and Restore all the settings, tool programs, passwords and part programs on local hard drive or on a USB memory stick
- Metric & fractional Imperial dimension system
- Multiple closed loop flying punch
- Multiple open loop flying punch with boost control
- Multiple Printers or print heads
- Multiple presses and gags (up to 128 presses and or gags)
- Integrated GAG feedback monitor
- Remote I/O over EtherCAT, no need to bring any wire to the controller, only an Ethernet cable
- Configurable I/O based on application
- Integrated event and production log, the logger keeps track of all the events and production data
- (Optional) Wireless Jog Push Button
- (Optional) Integrated Rollformer Control System
- (Optional) Integrated Hydraulics Control System
- (Optional) Integrated machine WEB and FLANGE adjustment control
- (Optional) Database connectivity to connect to any standard database such as SQL server to receive production recipe and send the production report
- (Optional) CAD file to part program conversion
- (Optional) Remote access over Internet. By providing an Internet connection to the controller, our technician can connect to the controller anywhere in the world to monitor, configure, upgrade or troubleshoot
- This controller is suitable for following applications:
  - Stud and Track lines
  - GreenField lines
  - Panel lines
  - Accessory lines
  - Structural Products
  - Slit Cut to Length lines
  - And more ...

# EtherCAT Connection Schematics



EtherCAT is a real-time Industrial Ethernet technology originally developed by Beckhoff Automation. It is industry standard and almost all the servo drive manufacturers have the EtherCAT option on their products.

Using the EtherCAT technology, we reduced the amount of wiring. No need to bring any wire to the controller, only a 24VDC power and an EtherNET cable.

## Wireless Jog Push Buttons



The controller is equipped with a wireless jog push button station. It can be used in manual mode to feed the material forward and reverse.

# Remote Access over EtherNET for Troubleshooting



The controller is equipped with a remote access capability and by providing an EtherNET connection, our technician can access the controller anywhere in the world for troubleshooting, configuration, start-up, updates and upgrades.